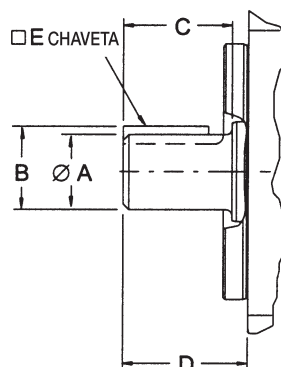


Eixos cilíndricos tipo SAE



NORMA	CÓDIGO	A	B	C	D	E	TORQUE MÁX. Nm
SAE J744-16-1 SAE "A"	01	15,88	17,73	24,0	32,0	4,0	58
SAE J744-19-1 SAE "19-1"	02	19,05	21,23	24,0	32,0	4,81	104
SAE J744-22-1 SAE "B"	05	22,22	25,12	33,0	41,0	6,35	135
SAE J744-25-1 SAE "B-B"	06	25,37	28,22	38,0	46,0	6,35	215
SAE J744-22-1 SAE "B"	05	22,22	25,12	33,0	41,0	6,35	135
SAE J744-25-1 SAE "B-B"	06	25,37	28,22	38,0	46,0	6,35	215
SAE J744-25-1 SAE "B-B"	06	25,37	28,22	38,0	46,0	6,35	215
SAE J744-32-1 SAE "C"	09	31,75	35,32	48,0	56,0	7,93	450
SAE J744-32-1 SAE "C"	09	31,75	35,32	48,0	56,0	7,93	450
SAE J744-38-1 SAE "C-C"	10	38,10	42,39	54,0	62,0	9,52	765
SAE J744-32-1 SAE "C"	09	31,75	35,32	48,0	56,0	7,93	450
SAE J744-38-1 SAE "C-C"	10	38,10	42,39	54,0	62,0	9,52	765
SAE J744-44-1 SAE "D"	13	44,45	49,46	67,0	75,0	11,11	1200